



BillieBars - AWNING MOUNT INSTALLATION



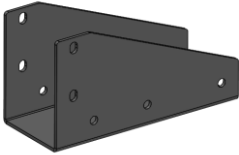
SUPPLIED PARTS

2X AWNING MOUNT BOTTOM BRACKETS

2X UPRIGHT BARS

2X AWNING MOUNT PLATES

1X HARDWARE BAG



AWNING MOUNT BOTTOM BRACKET (X4)



UPRIGHT BARS (X2)



AWNING MOUNT PLATES (X4)

TOOLS REQUIRED

13MM WRENCH and SOCKET

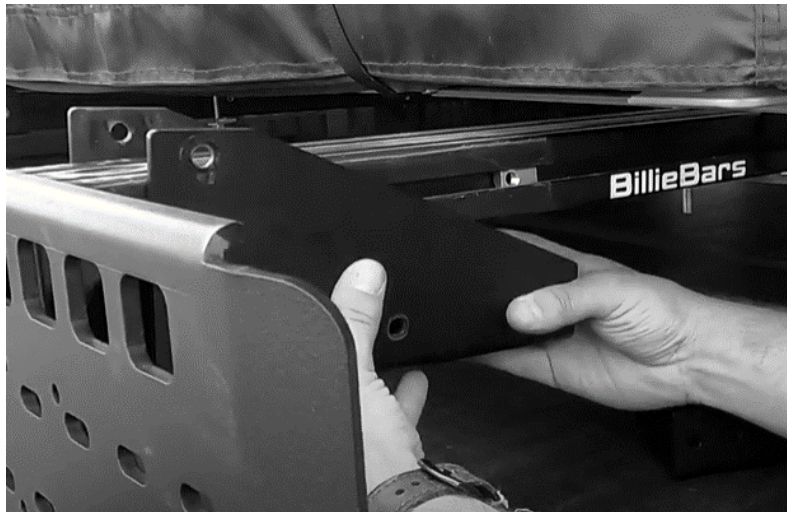
TAPE MEASURE

INSTALLATION

Torque and Tool Chart		
Bolt	Tool	Torque
M8 Hex Hd Bolt or Nut	13mm Wrench and Socket	20-25 ft*lbs

AWNING MOUNT BOTTOM BRACKETS

When installing the bottom mount brackets, keep all hardware hand tight, tighten down during final assembly. Install the six roll-in t-nuts into the crossbar channels.



Align t-nuts with bolt holes in the bottom mount and install the small 13mm Hex hd bolts. The hardware stack up will be Hex Bolt, Lock Washer, Flat washer.



URIGHT BARS

Note: All long hardware, nuts, and washers are identical.

Place vertical uprights (x2) into lower brackets that were installed above. Use the 110mm long M8 Bolts with a large flat washer under the head of the bolt and insert through the bottom brackets and through the vertical uprights. Hand tighten the nylon locking nut with a flat washer under the nut.



AWNING MOUNT PLATES

Place Upper Awning Mount Plates (x2) onto the vertical uprights that were installed above. Use the 110mm long M8 Bolts with a large flat washer under the head of the bolt and insert through the upper gussets and through the vertical uprights. Hand tighten the nylon locking nut with a large flat washer under the nut.

Note: The upper awning mount plate has adjustment holes for the user to select desired height of awning.



Tighten All 20 M8 Screws to 20-25 ft*lbs using a 13mm wrench and socket. Periodically check tightness.

USE GUIDELINES

We encourage safe usage of all our products we have tested and designed for real life use. This being said, there are always outside factors we can't always account for and comprehend.

- Only use racks that were designed for your specific vehicle.
- Be certain all knobs, bolts, screws and nuts are firmly tightened and torqued before every driving event. These should be periodically inspected for tightness and any other stress or signs of fatigue.
- The maximum loads should never be exceeded. Weight ratings are 400lbs dynamic and 800lbs static max distributed load for the 5 and 8 inch high racks. The weight rating our retractable covers with integrated t-slot racks are way higher than the actual covers can handle. Please refer to your cover manufacturers' suggested loads. These loads are always calculated by the entirety of accessories mounted. For example, any mounting brackets would be added to the load being carried. The maximum weight rating will also be determined by the truck manufacturers' recommended load rating and should never be exceeded by our ratings.
- High speed off-road driving has not officially been tested with our racks.
- It is the user's responsibility to ensure all loads are attached firmly and safely. All local and state laws should be followed when loading your vehicle.

WARRANTY

BillieBars Warrants our branded products free from defects in material and workmanship, for terms specified below, provided there has been normal use and proper maintenance. All remedies under this warranty are limited to the repair or replacement of any item found by the factory to be defective within the time period specified. Damage to products caused by accidents, Fire, vandalism, negligence, mis-installation, misuse, Acts of God, or by defective parts not manufactured by us, is not covered under this warranty. THE WARRANTY TIME PERIOD IS AS FOLLOWS: (2) TWO YEARS FROM DATE OF PURCHASE.

FOR WARRANTY ISSUES PLEASE REACHOUT TO US AT SUPPORT@BILLIEBARS.COM